

TOWN OF CLAY
LAND USE STUDY & NORTHERN
CLAY AREA PLAN OPEN HOUSE

November 29, 2023

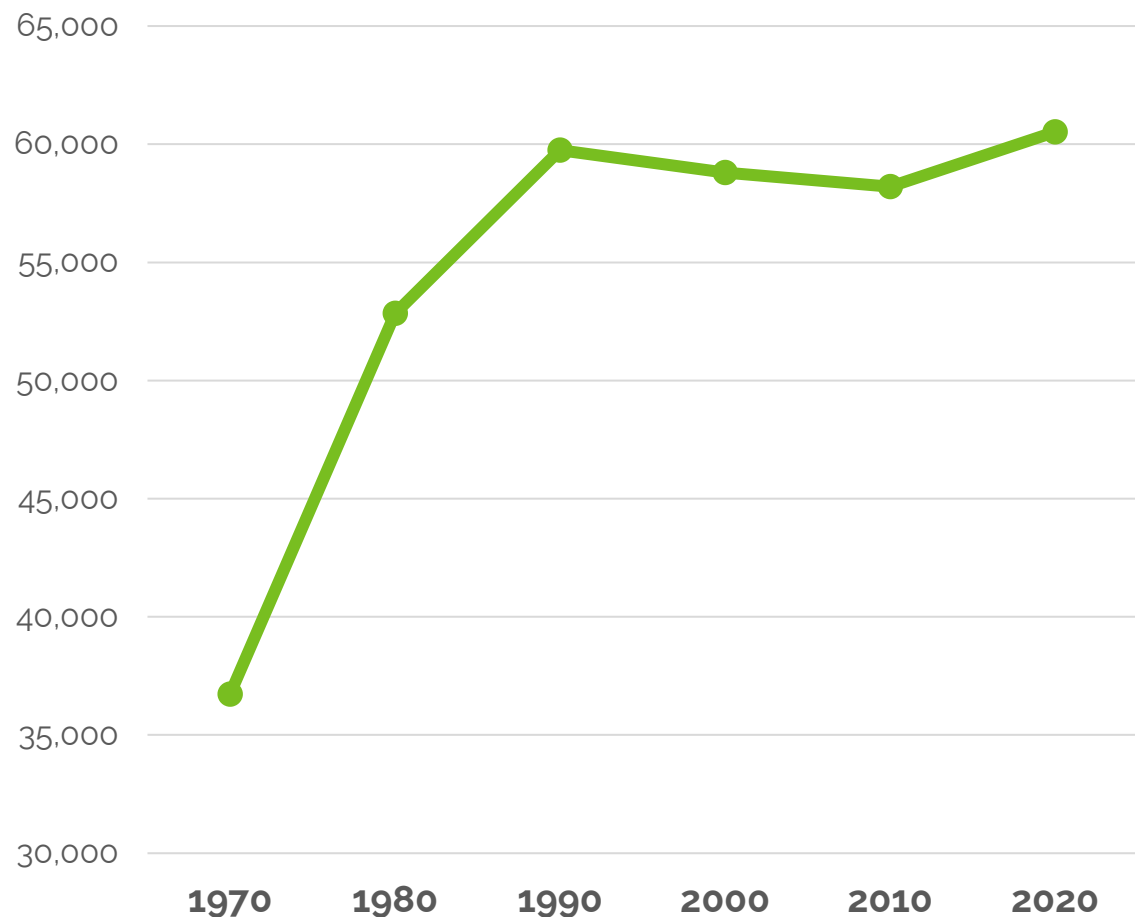
EXISTING CONDITIONS

COMMUNITY PROFILE

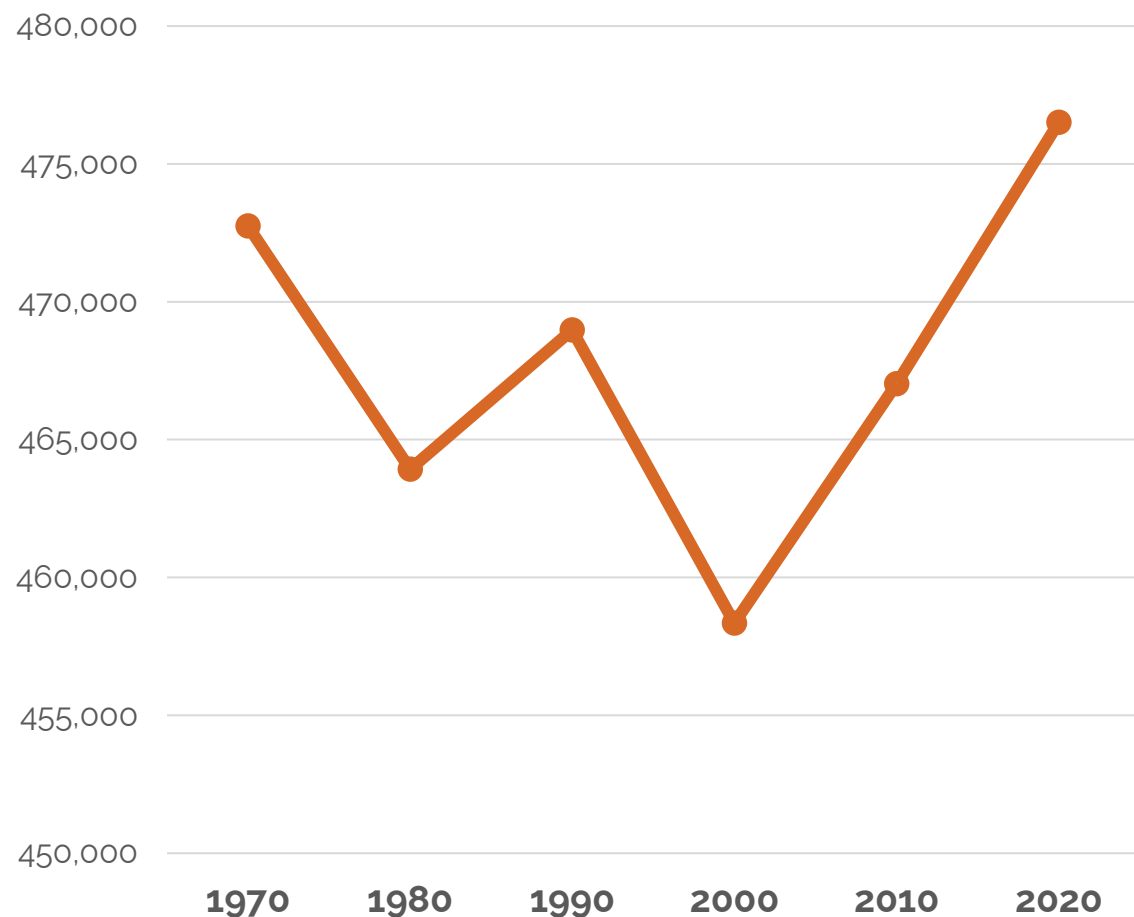
DEMOGRAPHICS

THE TOWN'S POPULATION HAS STABILIZED

Town of Clay Population
1970-2020



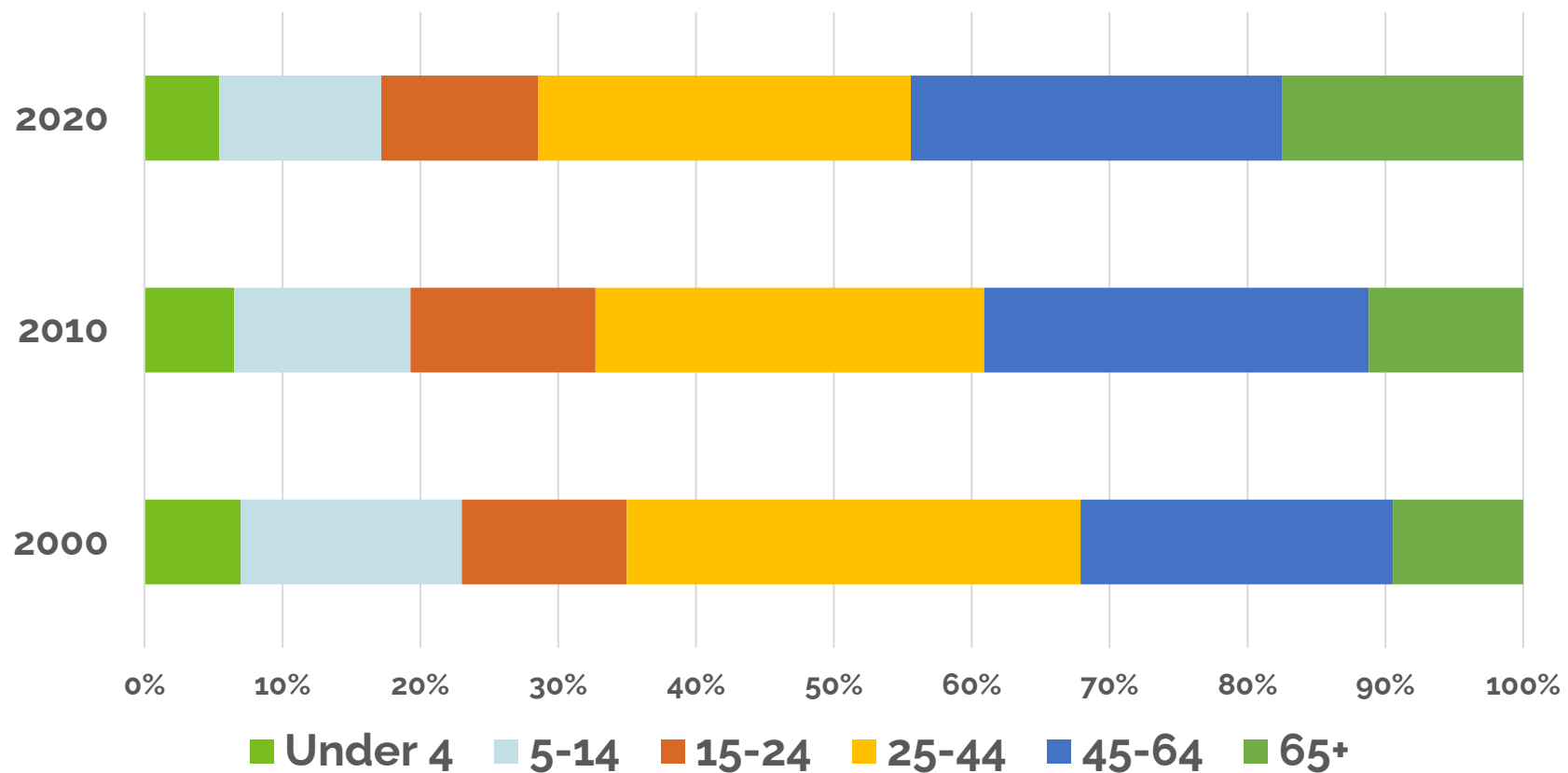
Onondaga County Population
1970-2020



DEMOGRAPHICS

THE TOWN'S POPULATION IS AGING

Age Group Cohorts
Town of Clay
2000-2020

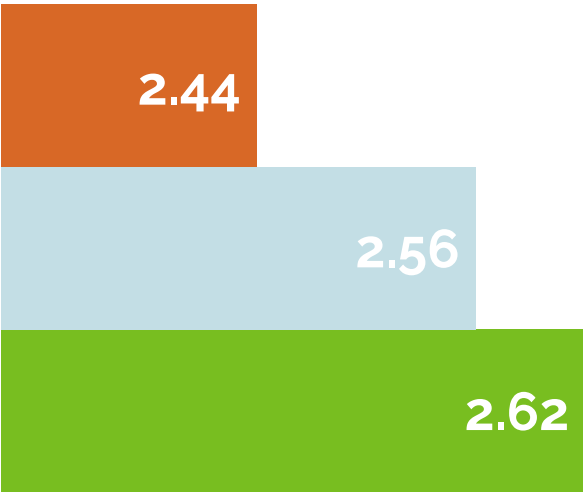


DEMOGRAPHICS

HOUSEHOLD SIZES ARE DECREASING (2000-2020)

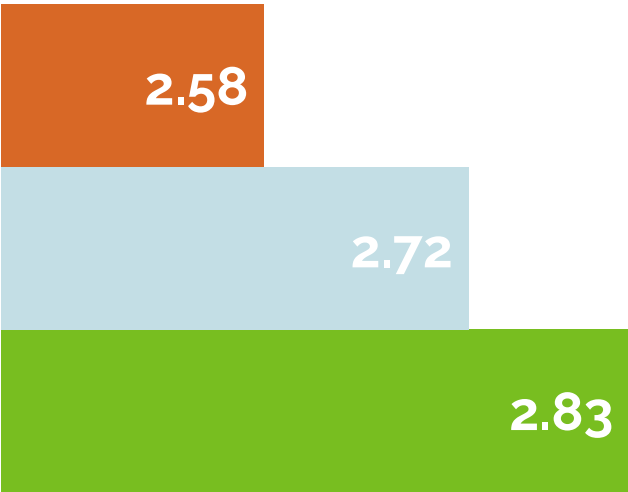
(PERSONS/HOUSEHOLD)

Overall



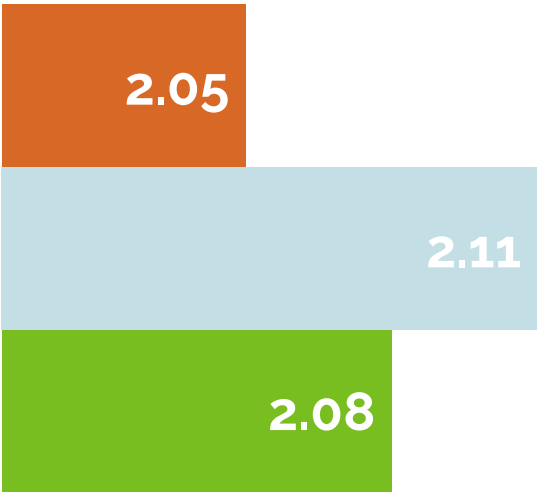
2020 2010 2000

Owners



2020 2010 2000

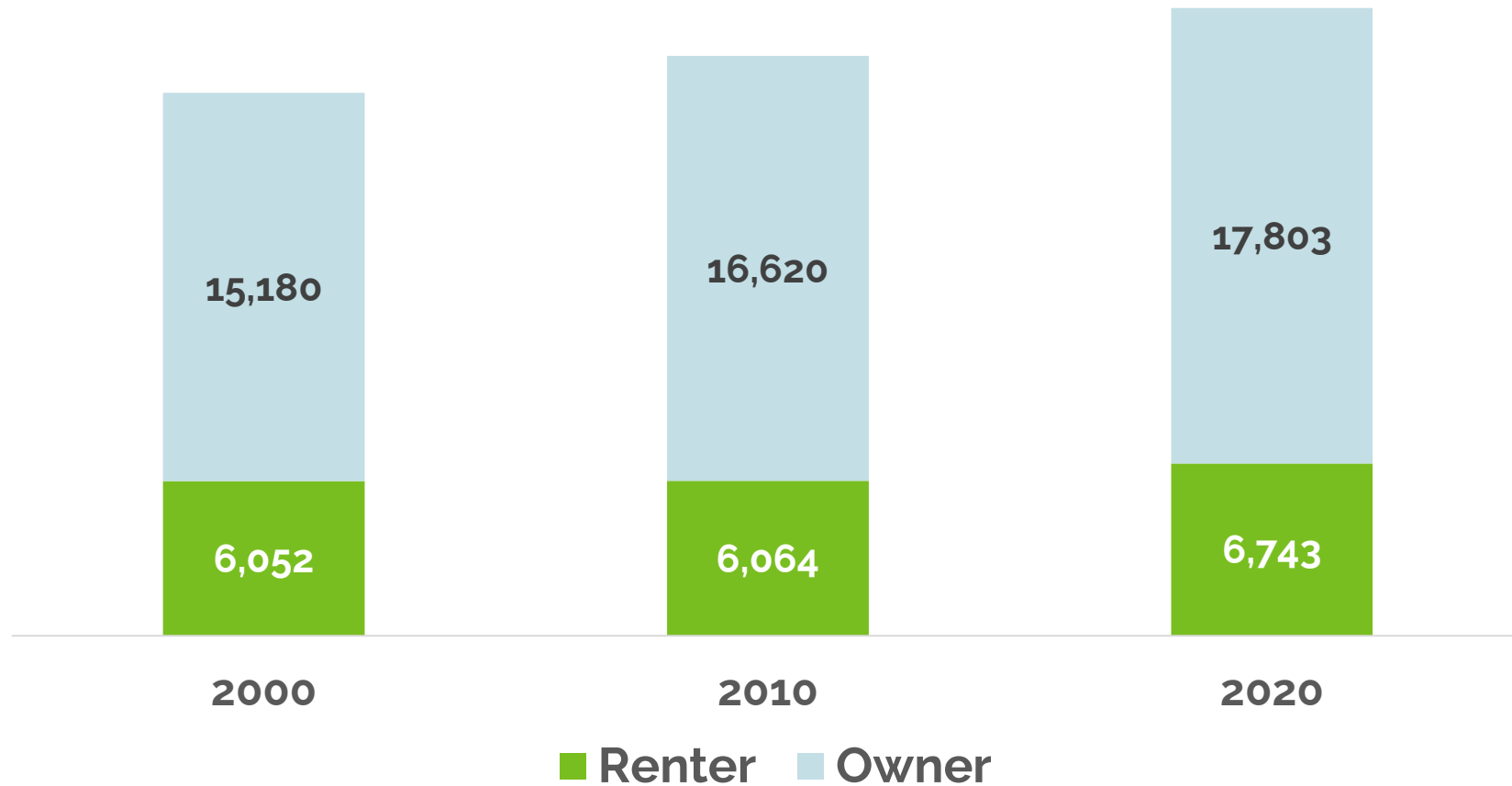
Renters



2020 2010 2000

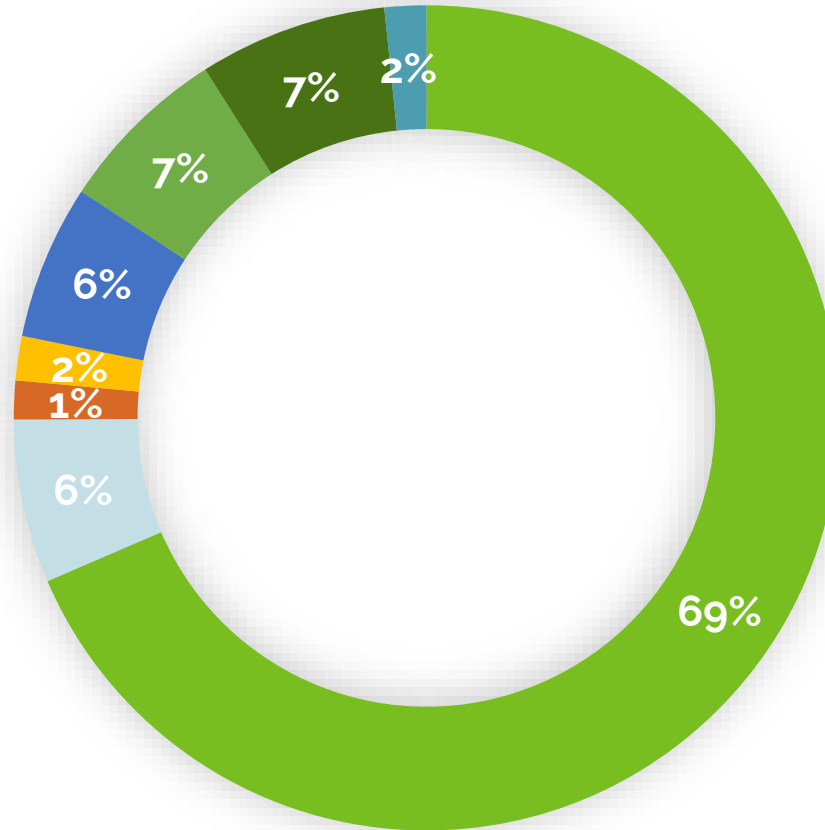
DEMOGRAPHICS

MOST HOUSEHOLDS ARE OWNER-OCCUPIED



DEMOGRAPHICS

MOST RESIDENTS LIVE IN SINGLE-FAMILY DETACHED HOMES (2020)



■ Single-family, detached
■ 3-4 units
■ 20 or more units

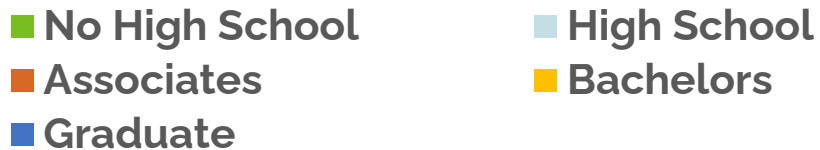
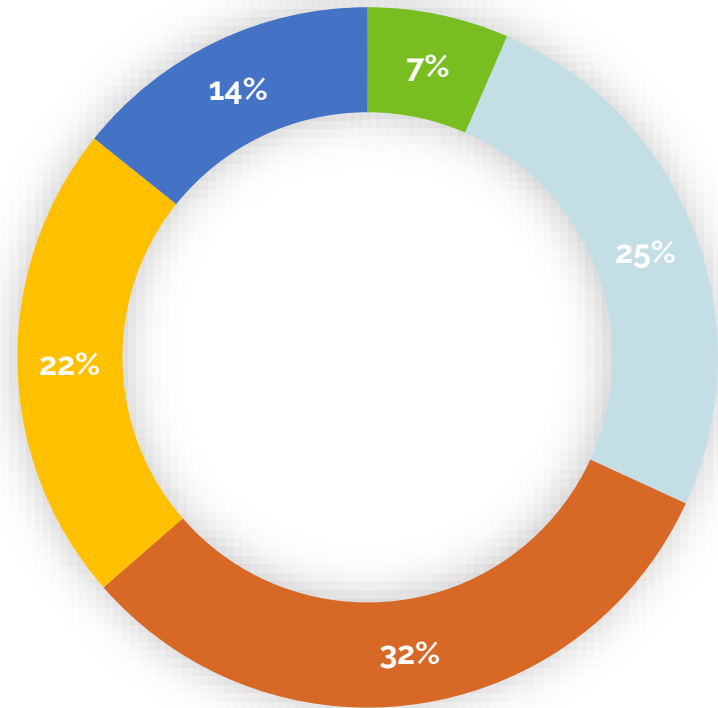
■ Single-family, attached
■ 5-9 units
■ Mobile Home

■ 2 units
■ 10-19 units

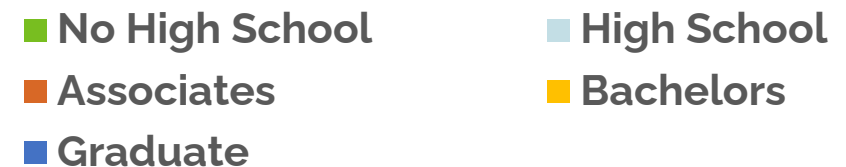
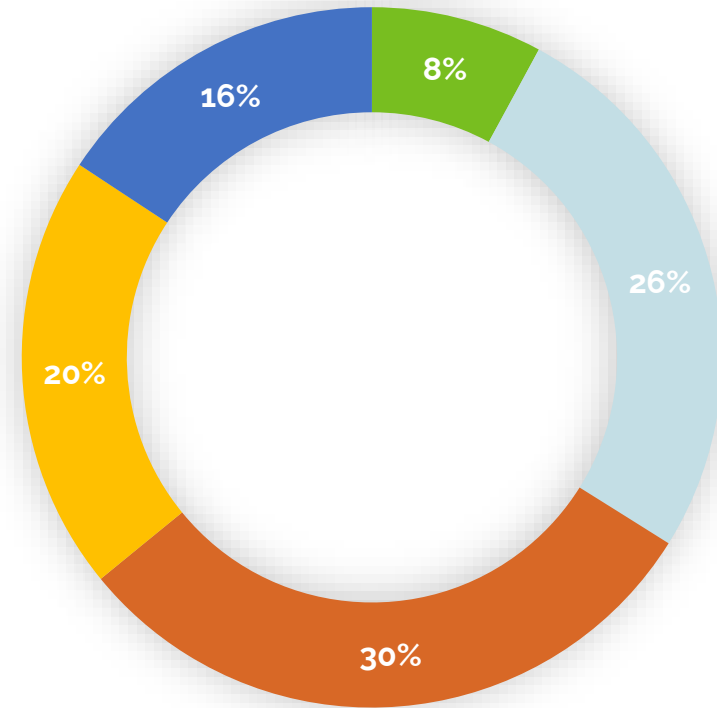
DEMOGRAPHICS

EDUCATIONAL LEVELS MIMIC COUNTY LEVELS (2020)

Town of Clay



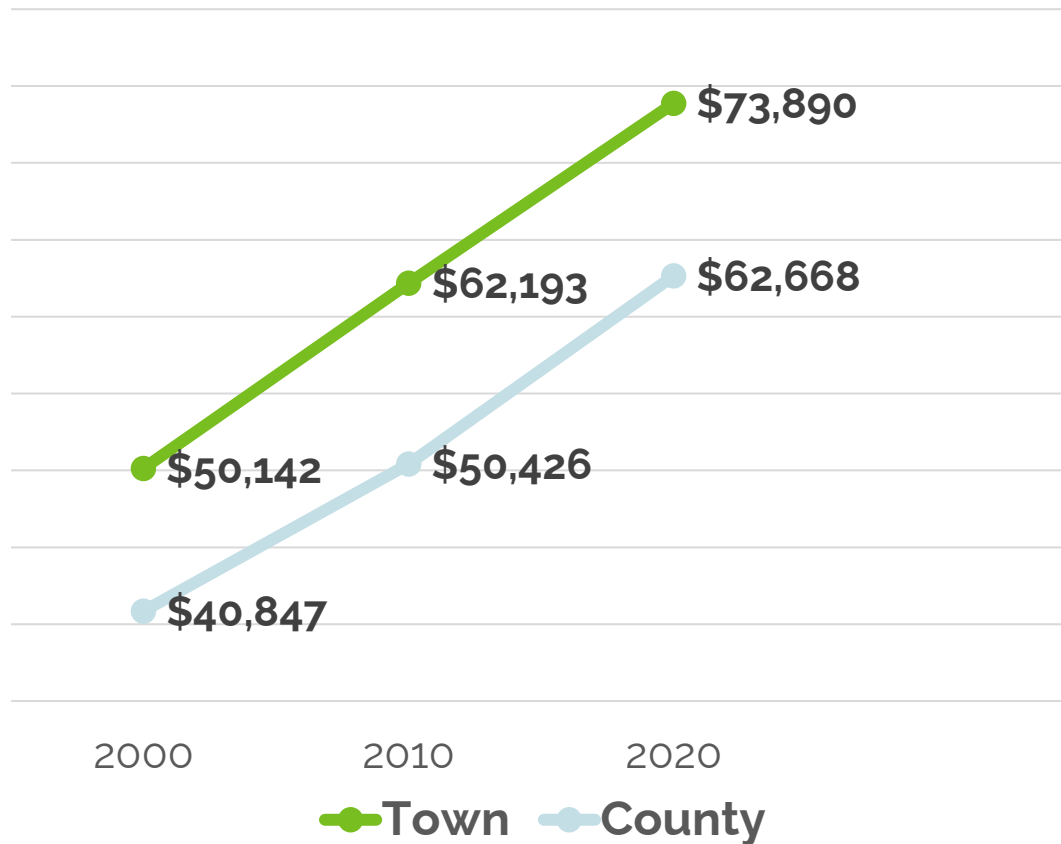
Onondaga County



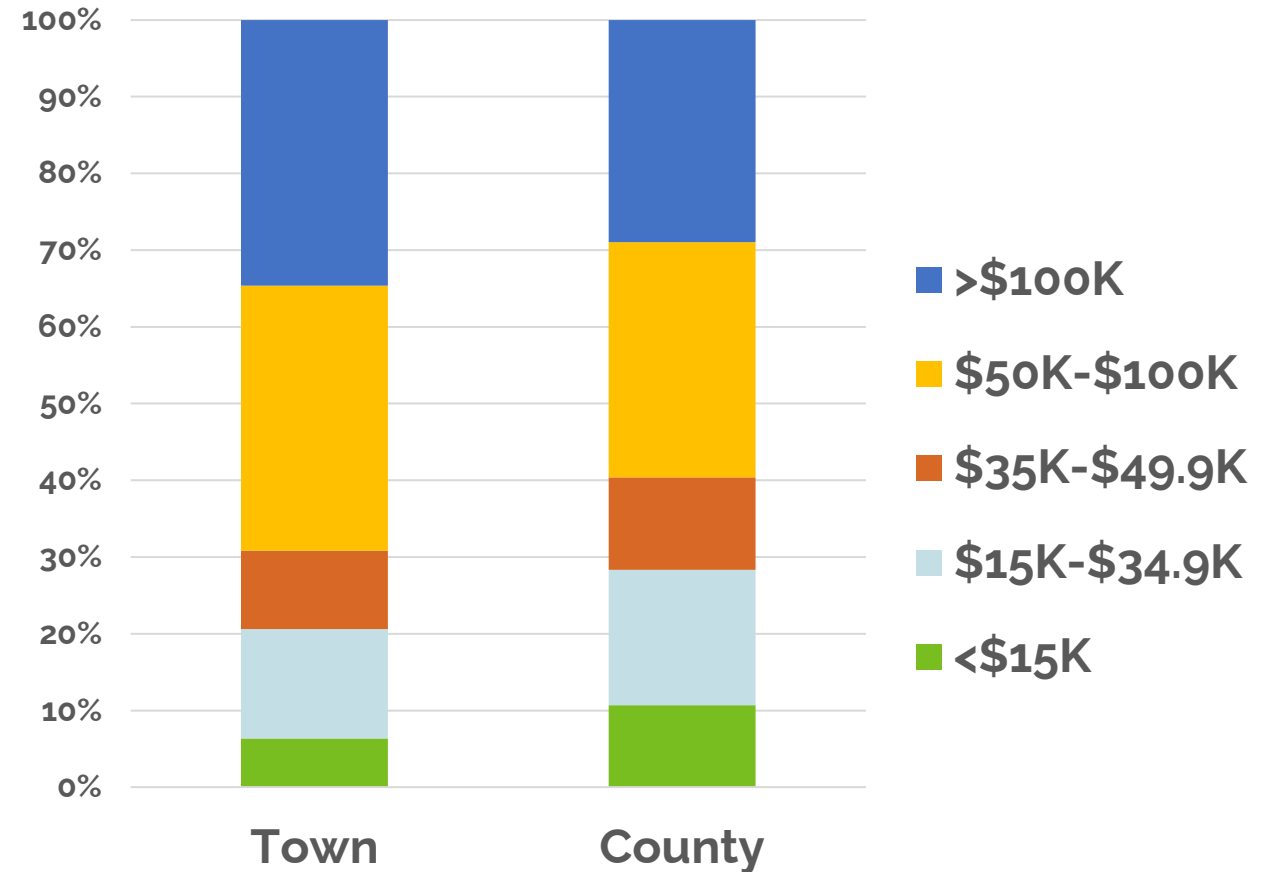
DEMOGRAPHICS

INCOME LEVELS

The Town's Rising Incomes Exceed County Levels

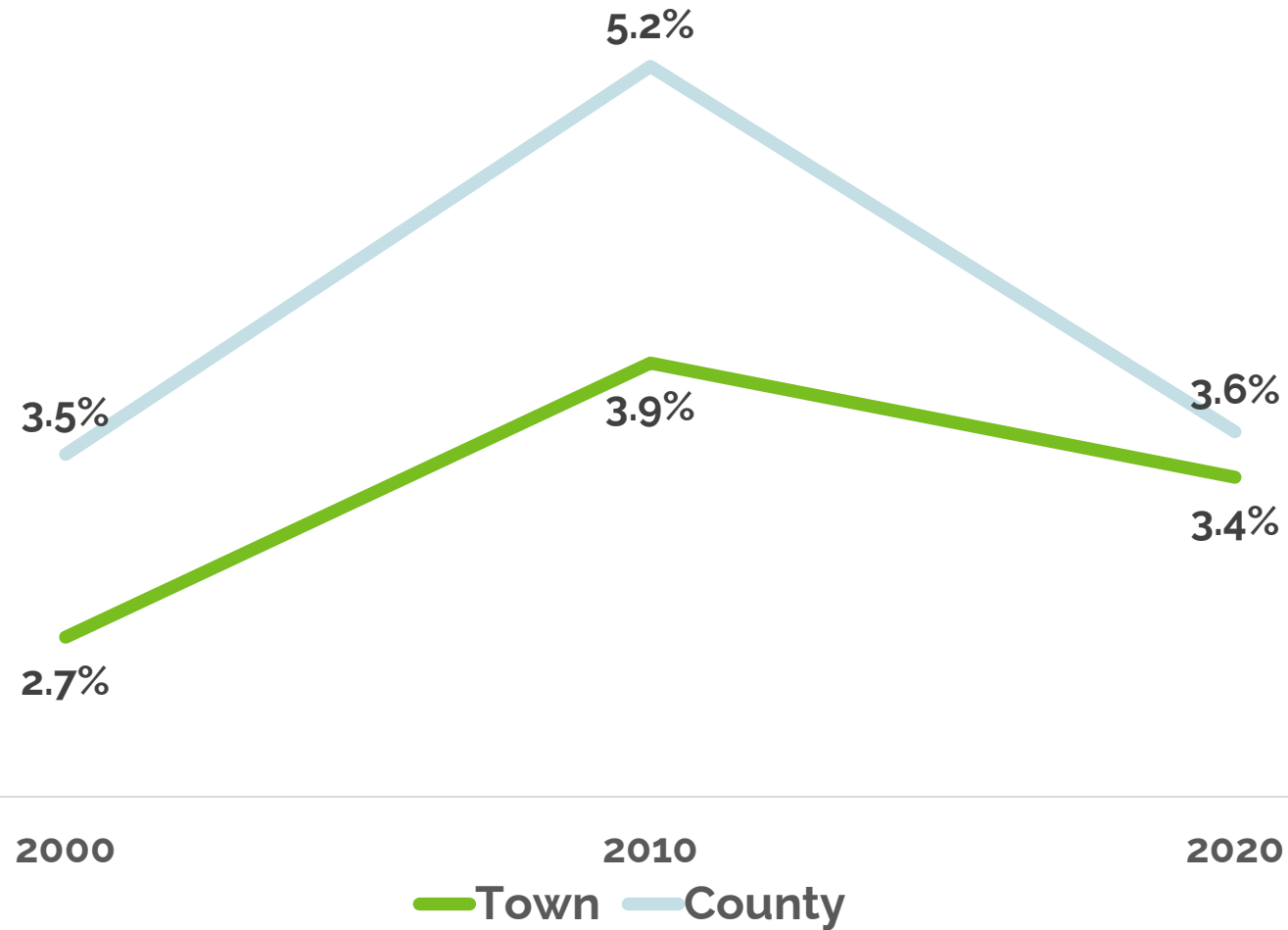


The Town's Has More Households in Higher Income Brackets than the County (2020)



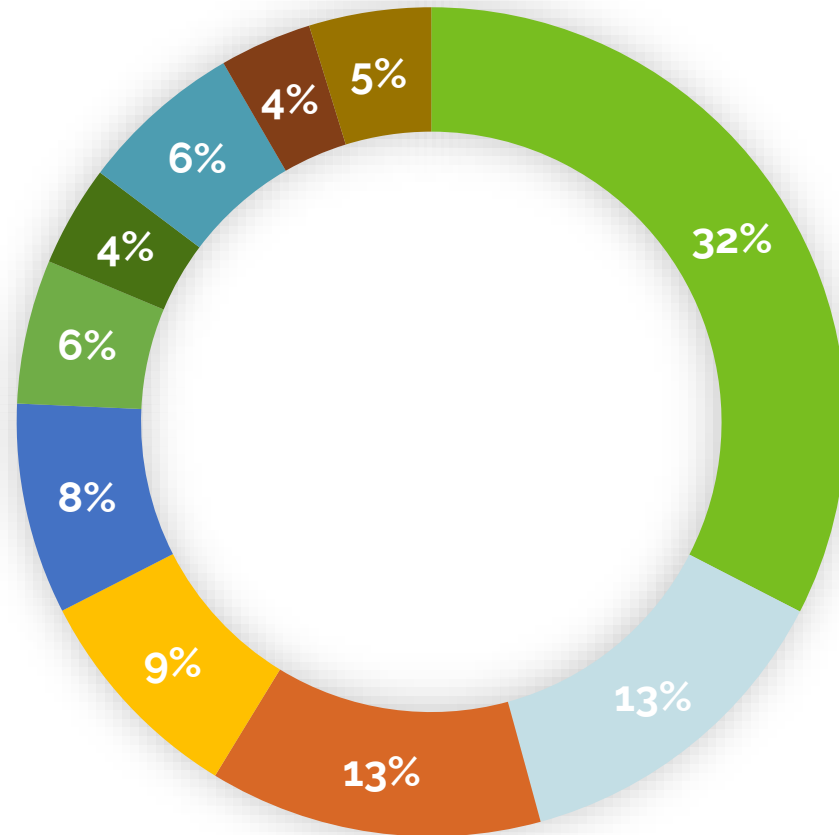
ECONOMY

UNEMPLOYMENT IS LOW = FULL EMPLOYMENT (5% OR LESS)



ECONOMY

**EDUCATION/HEALTH, PROFESSIONAL & RETAIL
JOBS DOMINATE (& MIMICS COUNTY % SHARE)**



Education/Health Care

Arts/Entertainment

Public Admin

Professional/Admin

Construction

Other

Retail

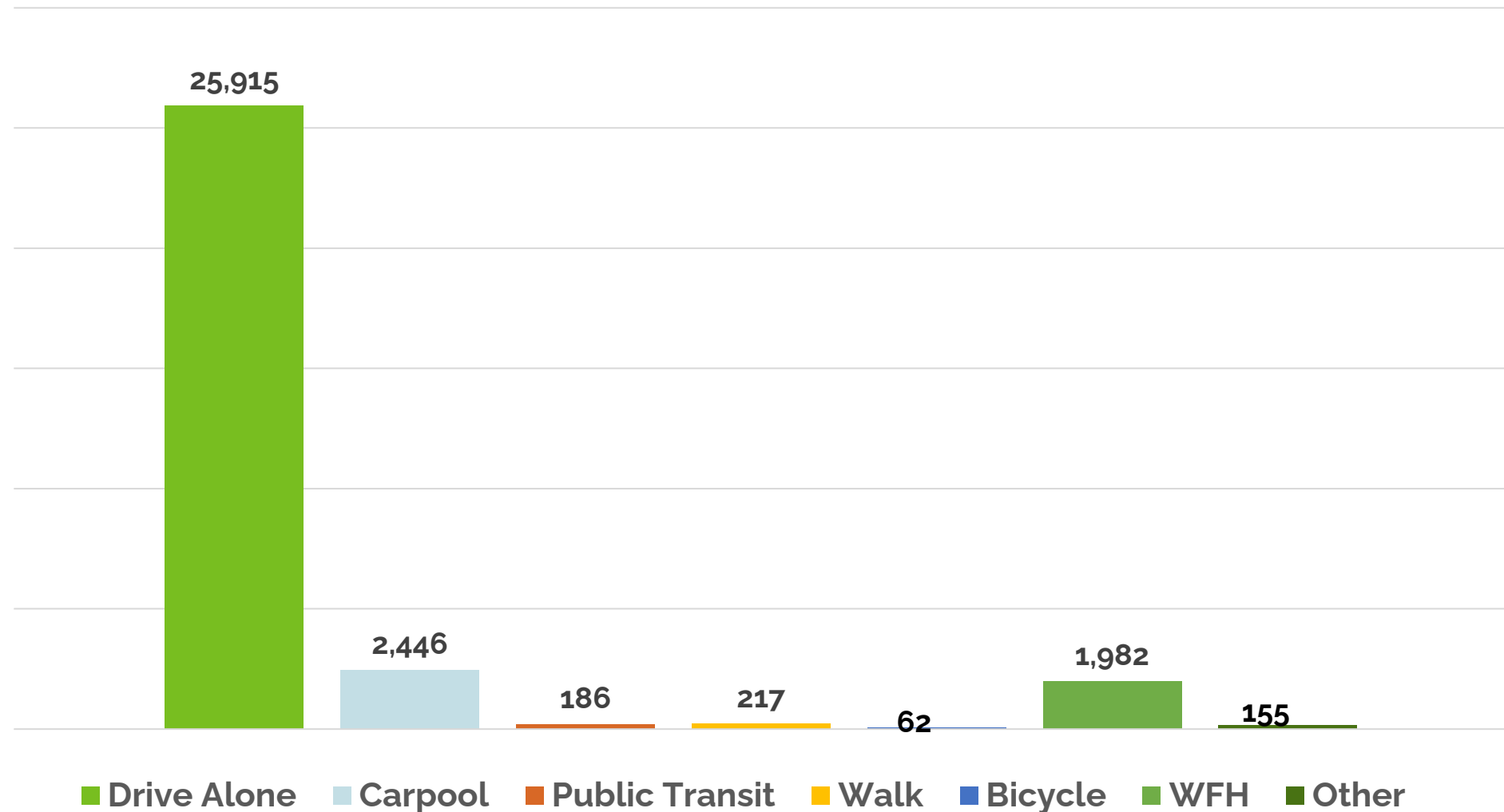
Wholesale Trade

Manufacturing

Transp/Warehousing

COMMUTING

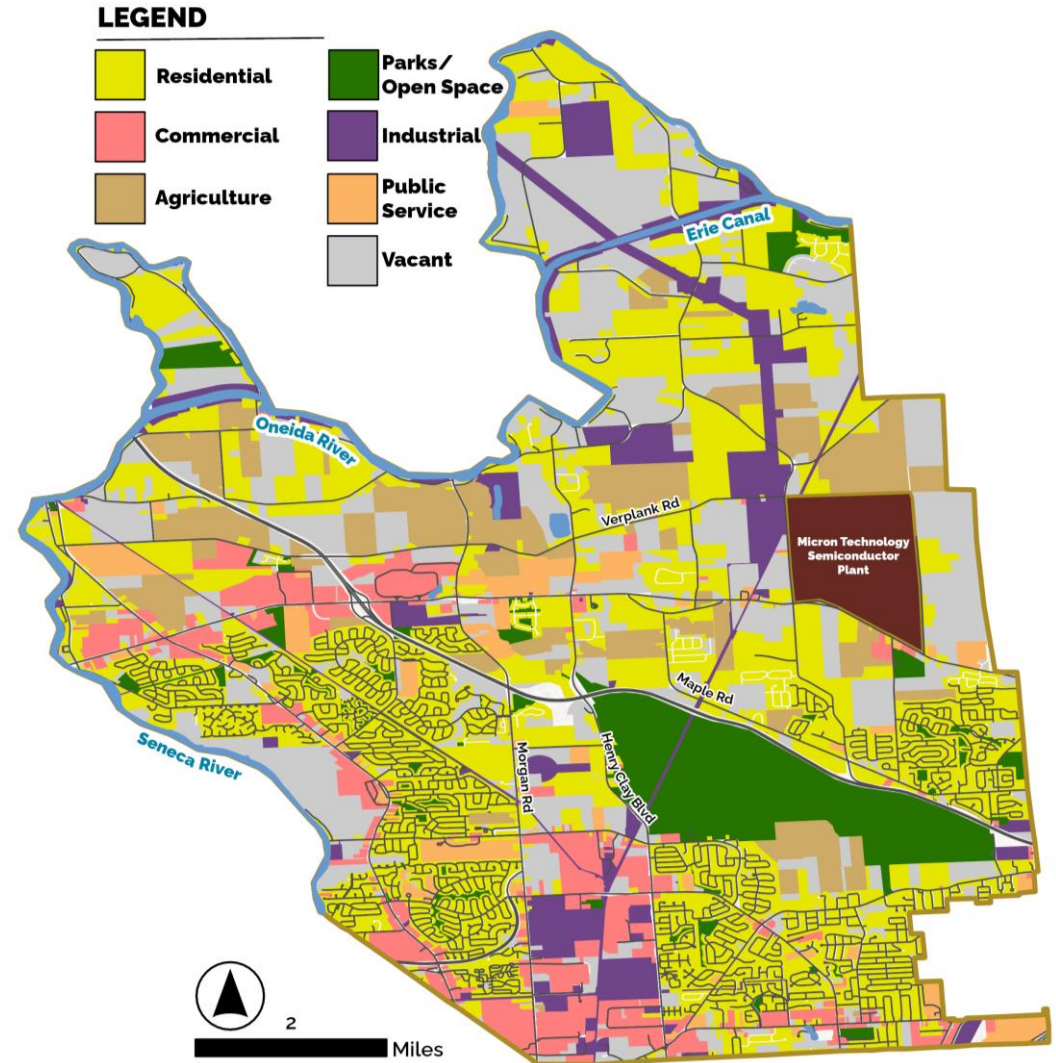
MAJORITY OF WORKERS DRIVE TO WORK (2020)



LAND USE AND LAND CHARACTERISTICS

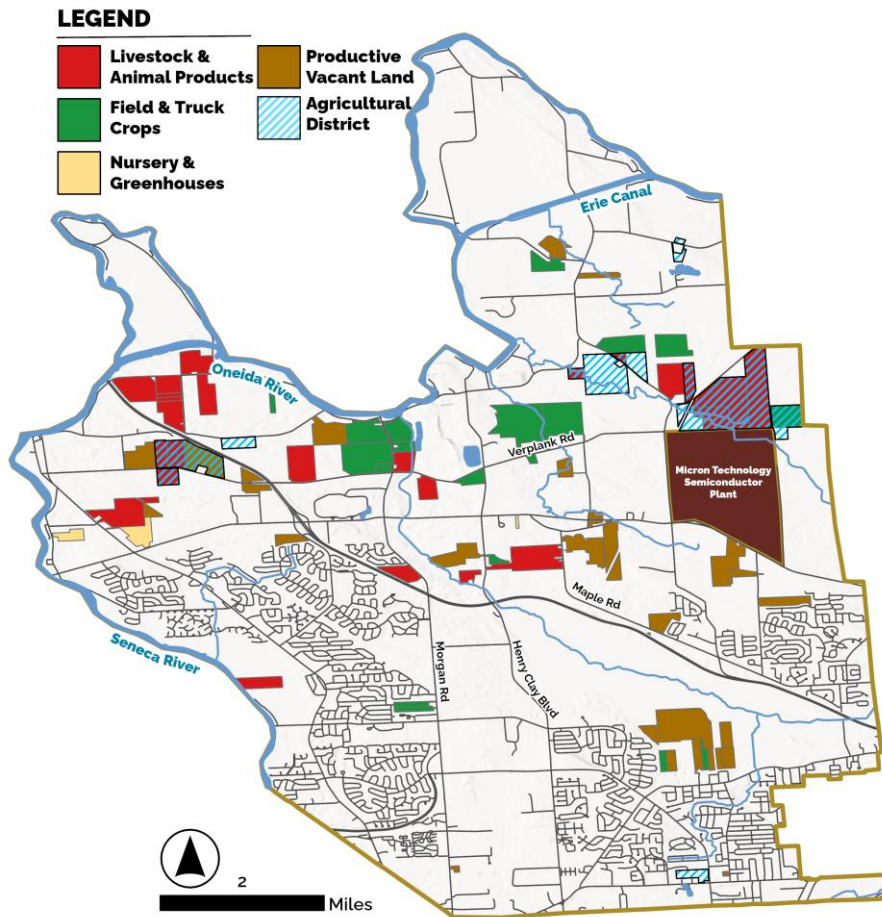
LAND USE

- Agricultural: 2,654 acres (9.3%)
- Commercial: 2,217 acres (7.8%)
- Residential: 11,099 acres (39.1%)
- Industrial/Utility: 2,593 acres (9.1%)
- Parks/Open Space: 2,232 acres (7.8%)
- Public Service: 1,031 acres (3.6%)
- Vacant: 6,556 acres (23.3%)



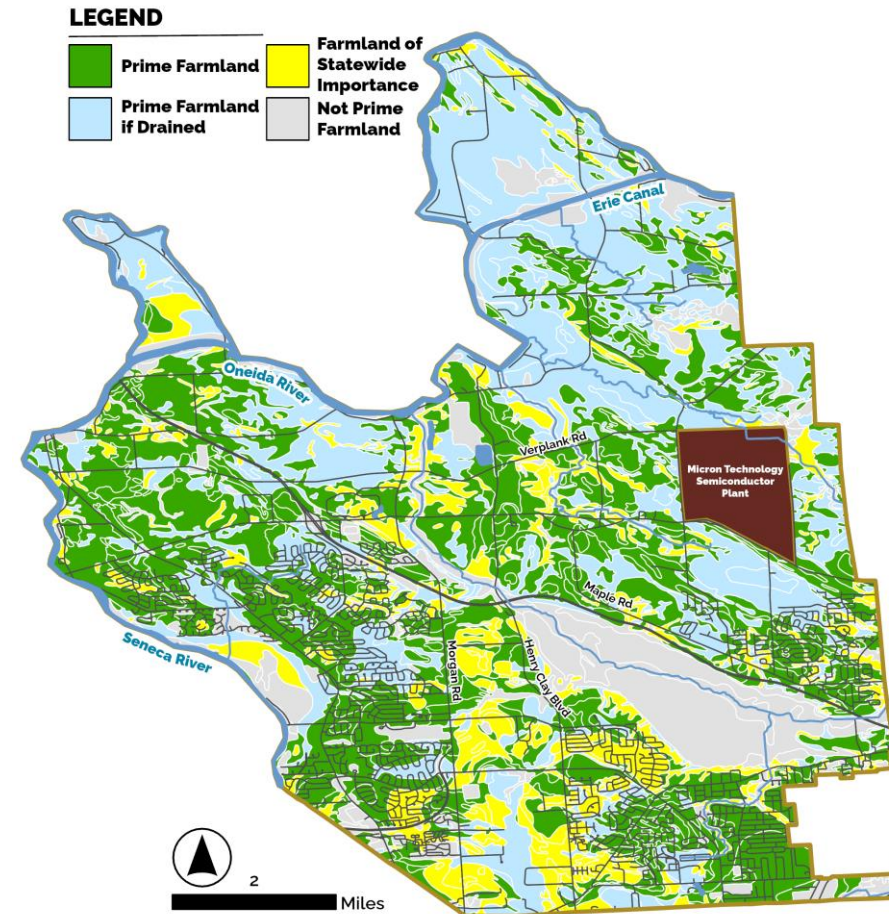
AG LAND & SOILS

Ag Land



Esri, NASA, NGA, USGS, FEMA

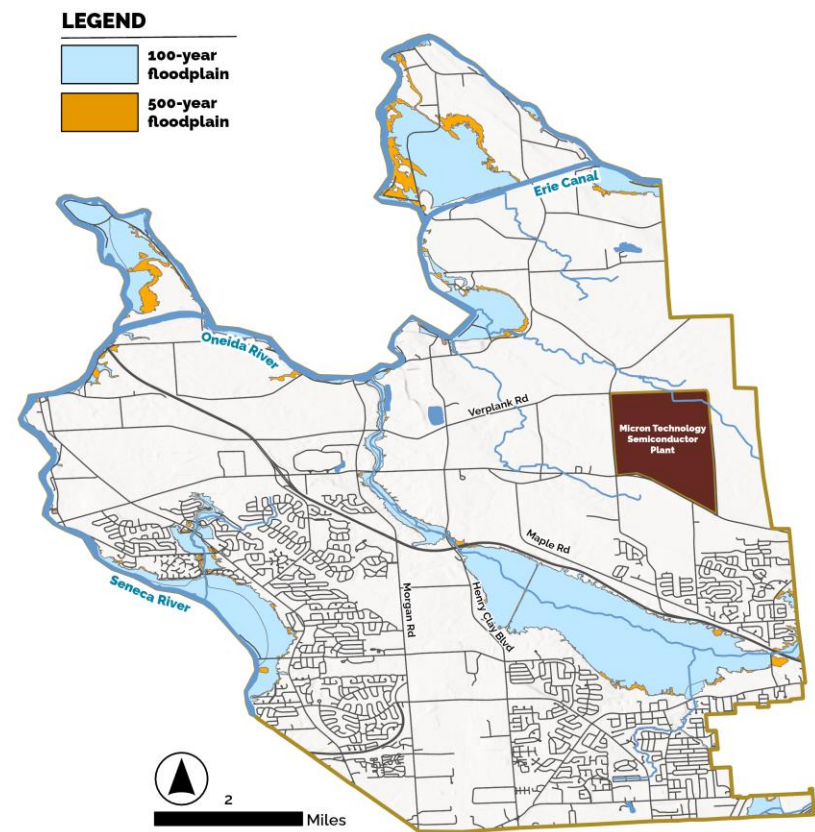
Prime Soils



Esri, NASA, NGA, USGS, FEMA

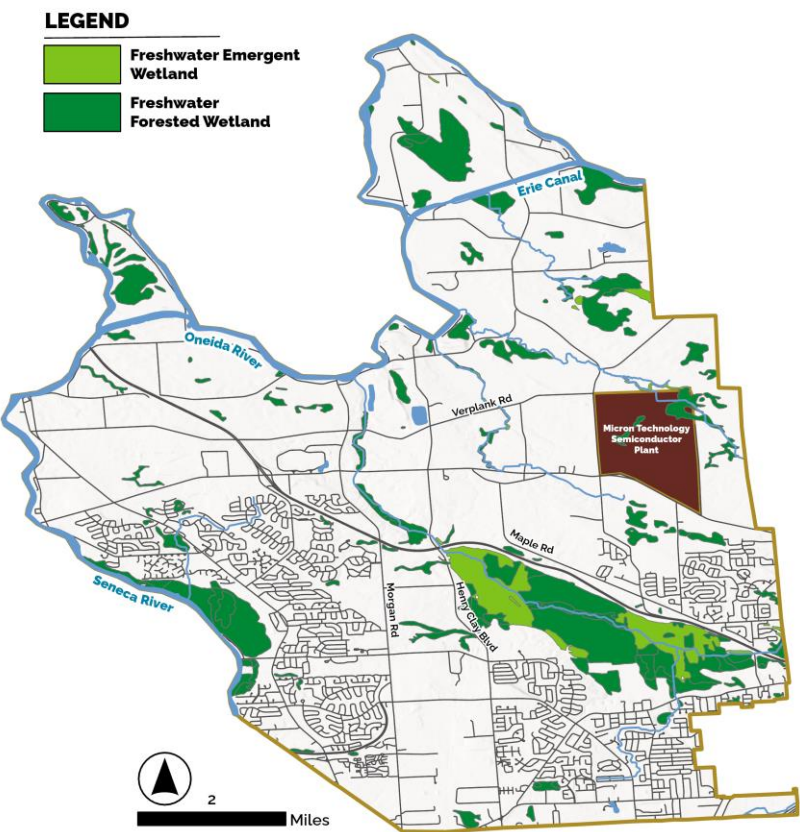
FLOODPLAINS & WETLANDS

Floodplains



Esri, NASA, NGA, USGS, FEMA

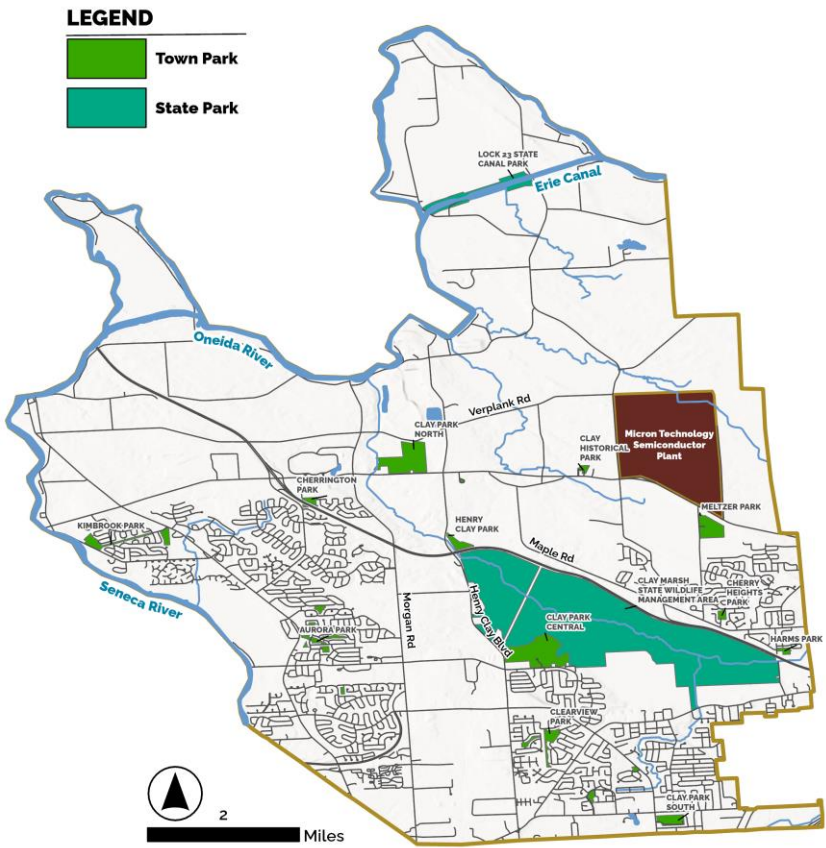
Wetlands



Esri, NASA, NGA, USGS, FEMA

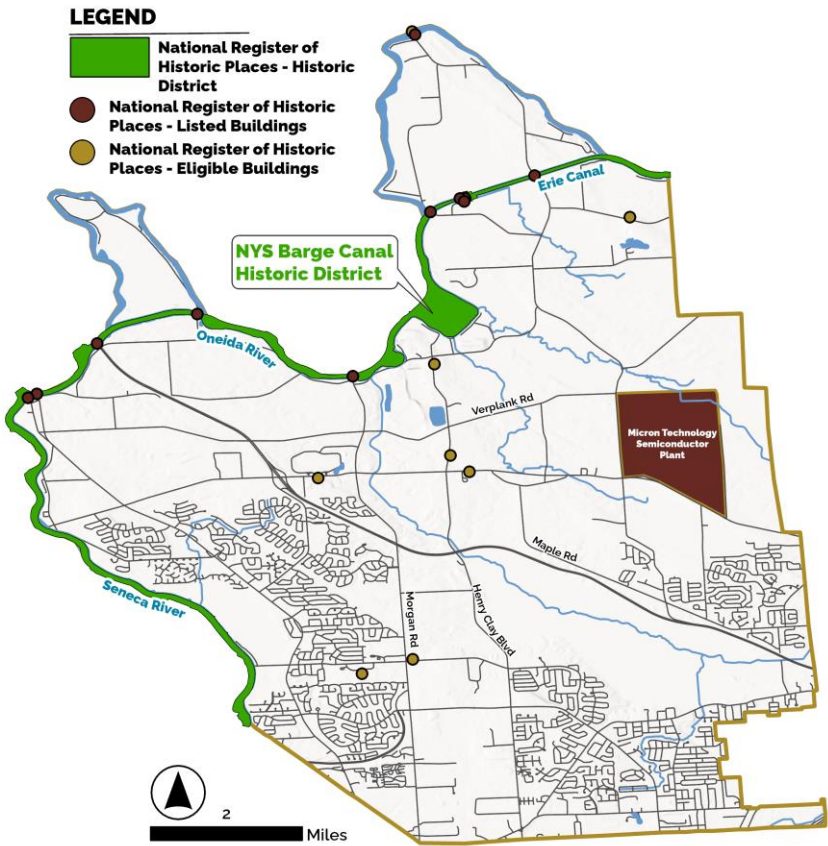
NATURAL & HISTORIC RESOURCES

Parks



Esri, NASA, NGA, USGS, FEMA

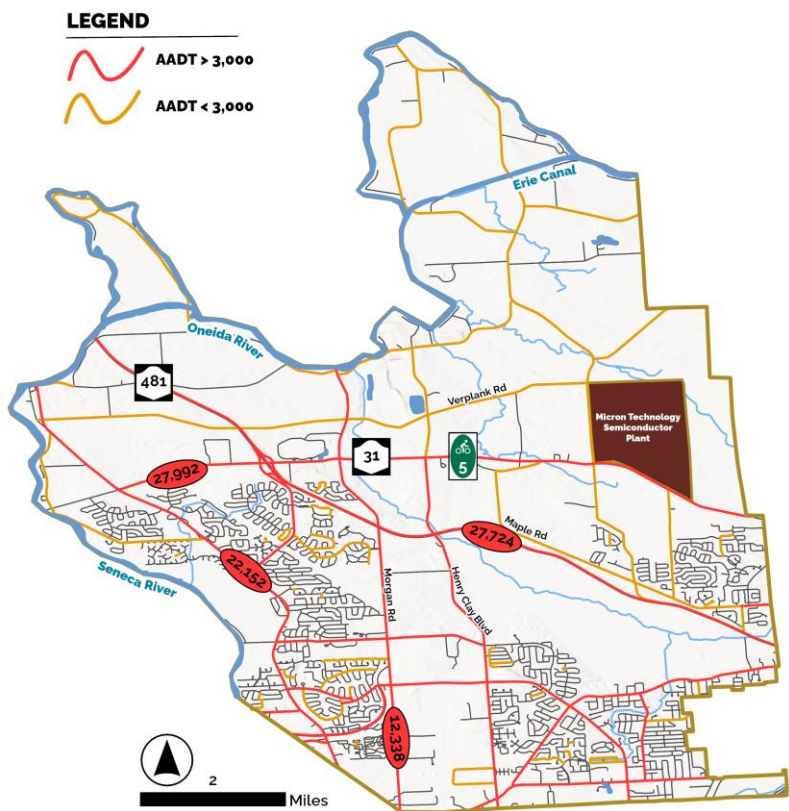
Historic Resources



Esri, NASA, NGA, USGS, FEMA

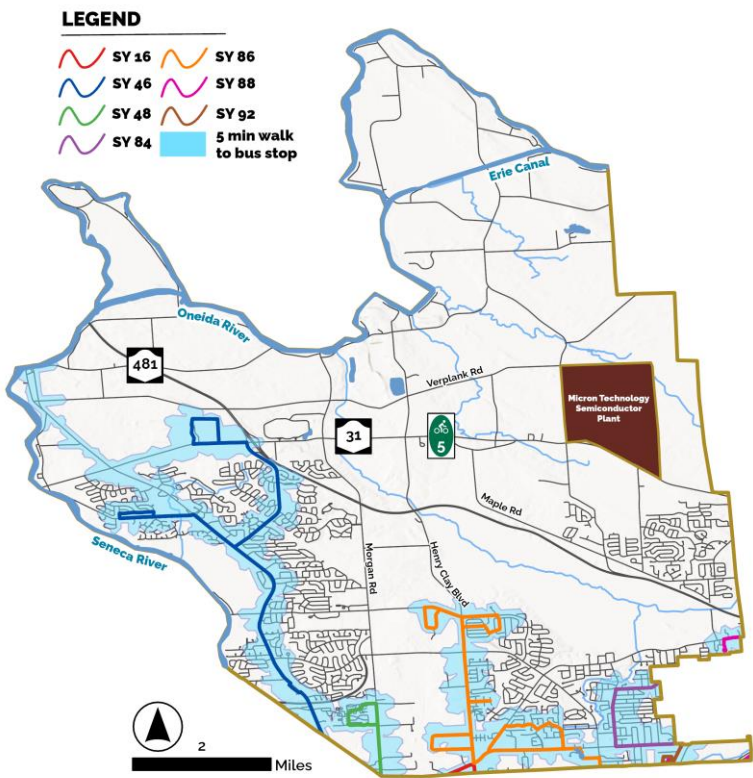
TRANSPORTATION DATA

Vehicle Volumes (AADT)



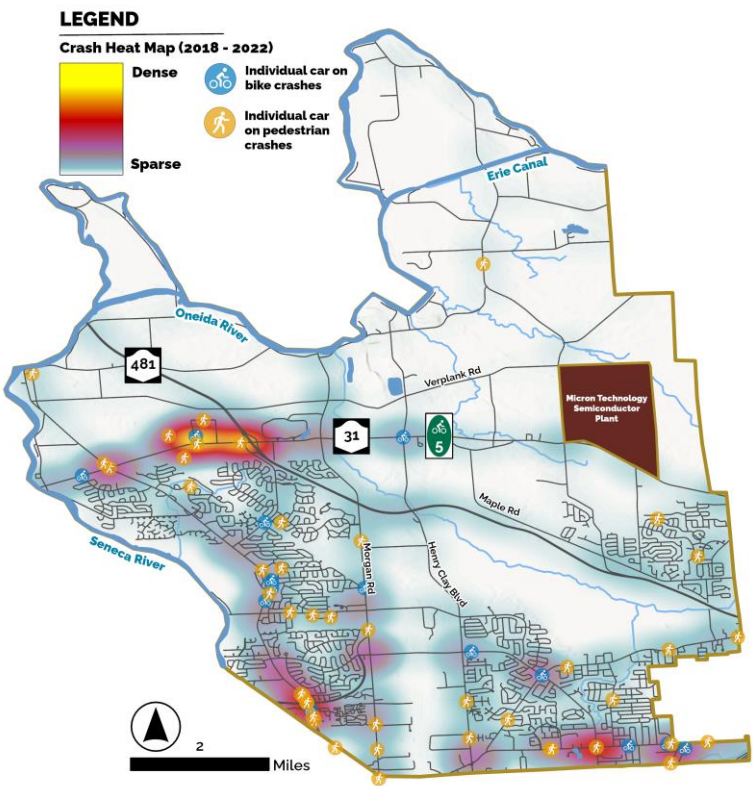
Esri, NASA, NGA, USGS, FEMA

Bus Routes



Esri, NASA, NGA, USGS, FEMA

Crash Data



Esri, NASA, NGA, USGS, FEMA

PREVIOUS THREE RIVERS PLAN

PREVIOUS THREE RIVERS PLAN

- Celebrate convergence of three waterways: Oneida, Oswego & Seneca Rivers
- Opportunities for:
 - Mixed-Use Development
 - Trails
 - Recreational and Park spaces
 - Waterfront uses

